

SERIES 72NS



N/A



-40°C to +240°C



100mm



80kg

Technopolymer wheel with nylon centre

- They are made with a centre of technopolymer with fibreglass tread with a special rubber that has a hardness of 82 shore A, high temperature resistant and certified "for food"
- These wheels ensure complete protection of floors and a total absence of noise, resistant to most chemicals, oils and animal fats
- The operating temperature range is from -40°C to +240°C for short periods
- Load capacities had been tested at ambient temperature



Available Bore Types



Plain Bore



Ball Bearing

Environments of Use

- Weak Acids
- Strong Acids
- Water
- Alcohol
- Weak Bases
- Strong Bases
- Hydrocarbons
- Solvents

Uses

Suitable for use at temperatures from -40°C up to +240°C. Particularly suitable for intermittent use in baking ovens (maximum permanence at 250°C is of 30 minutes, with subsequent period of resting of at least 30 minutes, at room temperature). They have excellent elasticity features and guarantee an easy overcoming of obstacles on uneven flooring also; compared to high temperature solid wheels, they allow significant noise reduction. They are combined with brackets and axle components specific for high temperatures; all wheels are also fitted with threadguards. Not suitable in the presence of obstacles along the path or on delicate flooring.

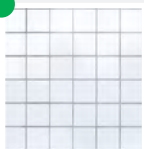
Industries



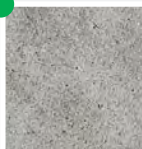
Food Industry

Floor Suitability

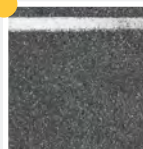
Suitable for use on tiles, resin-cement; not recommended on abrasive, unpaved floors or in the presence of processing residues. Not suitable on delicate floor or with obstacles along the path. They do not mark the floor.



Tile



Cement-Resin



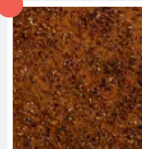
Asphalt



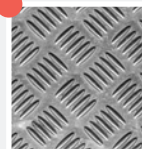
With Chips



With Obstacles



Not Paved



Expanded Metal

SERIES 72NS CONTINUED



N/A



-40°C to +240°C



100mm



80kg

WHEELS



Plain Bore

(mm)	(mm)	(mm)	(mm)	(daN)	(code)
100	30	12	40	80	72NS0001



Ball Bearing

(mm)	(mm)	(mm)	(mm)	(daN)	(code)
100	30	8	40	80	72NS0002

TOP PLATE CASTOR



								SWIVEL	FIXED	SWIVEL & BRAKE
	100	30	127	100x85	80x60	9	80	72SN1001	72SN2001	72SN3001
								SWIVEL	FIXED	SWIVEL & BRAKE
	100	30	127	100x85	80x60	9	80	72SN1002	72SN2002	72SN3002

For technical help and advice contact

T: 01457 837772 E: sales@aut.co.uk

SERIES 72NS CONTINUED



N/A



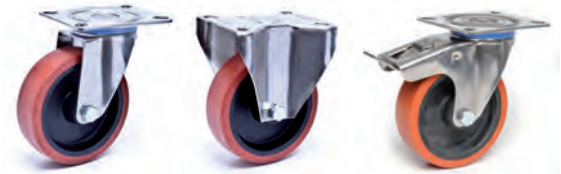
-40°C to +240°C



100mm



80kg



STAINLESS STEEL TOP PLATE CASTOR

								SWIVEL	FIXED	SWIVEL & BRAKE
	100	30	127	100x85	80x60	9	80	72SN1003	72SN2003	72SN3003
								SWIVEL	FIXED	SWIVEL & BRAKE
	100	30	127	100x85	80x60	9	80	72SN1004	72SN2004	72SN3004

BOLT HOLE CASTOR

							BOLT HOLE	BOLT HOLE & BRAKE
	100	30	127	12	80		72SN4001	72SN5001
							BOLT HOLE	BOLT HOLE & BRAKE
	100	30	127	12	80		72SN4002	72SN5002

STAINLESS STEEL BOLT HOLE CASTOR

							BOLT HOLE	BOLT HOLE & BRAKE
	100	30	127	12	80		72SN4003	72SN5003
							BOLT HOLE	BOLT HOLE & BRAKE
	100	30	127	12	80		72SN4004	72SN5004

